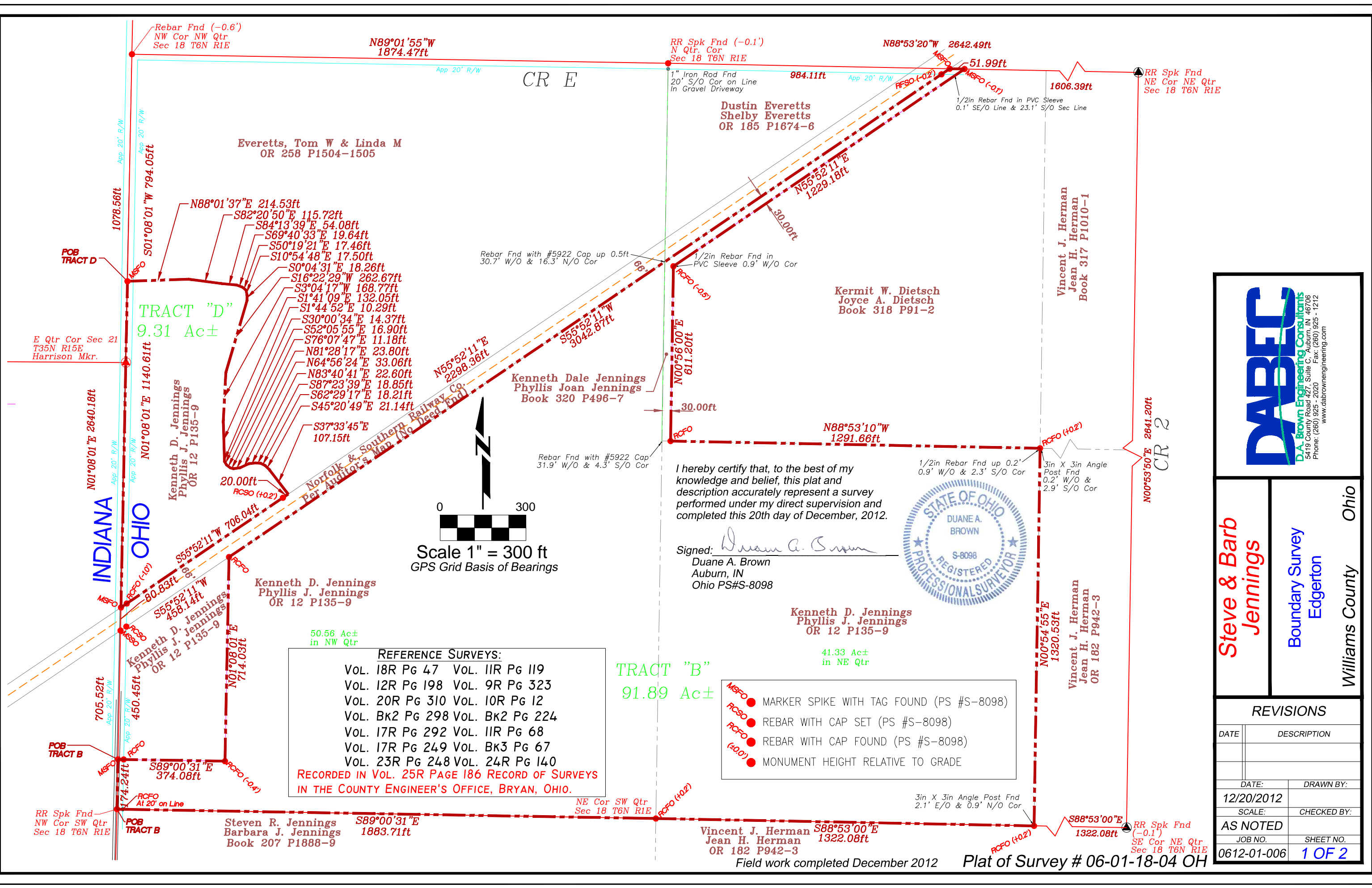


K:\2006\0612-01\jennings in&oh bndry dec 2012.dwg. Saved by: danielb. 12/21/2012 6:02:31 PM. 1:1



Legal Description: Tract B

A tract of land situated in the Northwest Quarter of Section 18, T6N, R1E, in Williams County, the State of Ohio, more fully described as follows:

COMMENCING at a Railroad Spike situated in the Southwest Corner of said Northwest Quarter which is the TRUE POINT OF BEGINNING; Thence North 01 Degrees 08 Minutes 01 Seconds East (GPS Grid Basis of Bearings), a distance of 174.24 feet along the West line of said Northwest Quarter to a Marker Spike with Tag (Duane A. Brown PS #S-8098); Thence South 89 Degrees 00 Minutes 31 Seconds East, a distance of 374.08 feet to a Rebar Stake with Cap (Duane A. Brown PS #S-8098); Thence North 01 Degrees 08 Minutes 01 Seconds East, a distance of 714.03 feet to a Rebar Stake with Cap (Duane A. Brown PS #S-8098); Thence North 55 Degrees 52 Minutes 11 Seconds East, a distance of 3042.87 feet to a Marker Spike with Tag (Duane A. Brown PS #S-8098); Thence South 88 Degrees 53 Minutes 20 Seconds East, a distance of 51.99 feet to a Marker Spike with Tag (Duane A. Brown PS #S-8098); Thence South 55 Degrees 52 Minutes 11 Seconds West, a distance of 1229.18 feet to a Rebar Stake with Cap (Duane A. Brown PS #S-8098); Thence South 00 Degrees 56 Minutes 00 Seconds West, a distance of 611.20 feet to a Rebar Stake with Cap (Duane A. Brown PS #S-8098); Thence South 88 Degrees 53 Minutes 10 Seconds East, a distance of 1291.66 feet to a Rebar Stake with Cap (Duane A. Brown PS #S-8098); Thence South 00 Degrees 54 Minutes 55 Seconds West, a distance of 1320.53 feet to a Rebar Stake with Cap (Duane A. Brown PS #S-8098); Thence North 88 Degrees 53 Minutes 00 Seconds West, a distance of 1322.08 feet to a Rebar Stake with Cap (Duane A. Brown PS #S-8098); Thence North 89 Degrees 00 Minutes 31 Seconds West, a distance of 1883.71 feet, to the POINT OF BEGINNING, said tract containing 91.89 Acres, more or less, and being subject to all public road rights-of-way and to all easements of record. A survey of said tract of land being represented by Plat of Survey #06-01-18-04 OH as prepared by D. A. Brown Engineering Consultants, 5419 County Road 427, Suite C, Auburn, Indiana 46706.

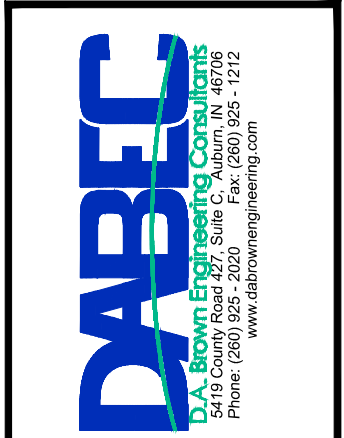
Legal Description: Tract D

A tract of land situated in the Northwest Quarter of Section 18, T6N, R1E, in Williams County, the State of Ohio, more fully described as follows:

COMMENCING at a Rebar situated in the Northwest Corner of said Northwest Quarter; Thence South 01 Degrees 08 Minutes 01 Seconds West (GPS Grid Basis of Bearings), a distance of 794.05 feet along the West line of said Northwest Quarter to a Marker Spike with Tag (Duane A. Brown PS #S-8098) the TRUE POINT OF BEGINNING; Thence the following twenty-one courses and distances approximating the extended centerline and centerline of the Cornell Ditch:

North 88 Degrees 01 Minutes 37 Seconds East, a distance of 214.53 feet; South 82 Degrees 20 Minutes 50 Seconds East, a distance of 115.72 feet; South 84 Degrees 13 Minutes 39 Seconds East, a distance of 54.08 feet; South 69 Degrees 40 Minutes 33 Seconds East, a distance of 19.64 feet; South 50 Degrees 19 Minutes 21 Seconds East, a distance of 17.46 feet; South 10 Degrees 54 Minutes 48 Seconds East, a distance of 17.50 feet; South 00 Degrees 04 Minutes 31 Seconds East, a distance of 18.26 feet; South 16 Degrees 22 Minutes 29 Seconds West, a distance of 262.67 feet; South 03 Degrees 04 Minutes 17 Seconds West, a distance of 168.77 feet; South 01 Degrees 41 Minutes 09 Seconds East, a distance of 132.05 feet; South 01 Degrees 44 Minutes 52 Seconds East, a distance of 10.29 feet; South 30 Degrees 00 Minutes 34 Seconds East, a distance of 14.37 feet; South 52 Degrees 05 Minutes 55 Seconds East, a distance of 16.90 feet; South 76 Degrees 07 Minutes 47 Seconds East, a distance of 11.18 feet; North 81 Degrees 28 Minutes 17 Seconds East, a distance of 23.80 feet; North 64 Degrees 56 Minutes 24 Seconds East, a distance of 33.06 feet; North 83 Degrees 40 Minutes 41 Seconds East, a distance of 22.60 feet; South 87 Degrees 23 Minutes 39 Seconds East, a distance of 18.85 feet; South 62 Degrees 29 Minutes 17 Seconds East, a distance of 18.21 feet; South 45 Degrees 20 Minutes 49 Seconds East, a distance of 21.14 feet; South 37 Degrees 33 Minutes 45 Seconds East, a distance of 107.15 feet;

Thence South 55 Degrees 52 Minutes 11 Seconds West, a distance of 706.04 feet to a Marker Spike with Tag (Duane A. Brown PS #S-8098); Thence North 01 Degrees 08 Minutes 01 Seconds East, a distance of 1140.61 feet along the West line of said Northwest Quarter, to the POINT OF BEGINNING, said tract containing 9.31 Acres, more or less, and being subject to all public road rights-of-way and to all easements of record. A survey of said tract of land being represented by Plat of Survey #06-01-18-04 OH as prepared by D. A. Brown Engineering Consultants, 5419 County Road 427, Suite C, Auburn, Indiana 46706.



Steve & Barb Jennings
 Boundary Survey
 Edgerton
 Williams County Ohio

REVISIONS	
DATE	DESCRIPTION
DATE:	DRAWN BY:
12/20/2012	
SCALE:	CHECKED BY:
AS NOTED	
JOB NO.	SHEET NO.
0612-01-006	2 OF 2

K:\2006\0612-01\jennings.in&oh.bndrv dec 2012.dwg. Saved by: danielb. 12/21/2012 6:02:31 PM. 1:1